



INSTALLATION INSTRUCTIONS

Accessory

BUSBAR KIT
P/N 0SS27-HL6-A10

Application

**SXS1000S2X/S2R/
S4X/S4R**
After 22YM

Publication No.

MII 17811

Issue Date

June 2023

Honda Dealer: Please give a copy of these instructions to your customer.

Not Applicable For These 2023 Talon "S" Series

- SXS1000S2XS/S2RS
- SXS1000S2XDS/S2RDS
- SXS1000S4XS/S4XDS

For 2023 Talon "S" Series the BUSBAR KIT required is 0SS27-HL6-A00.

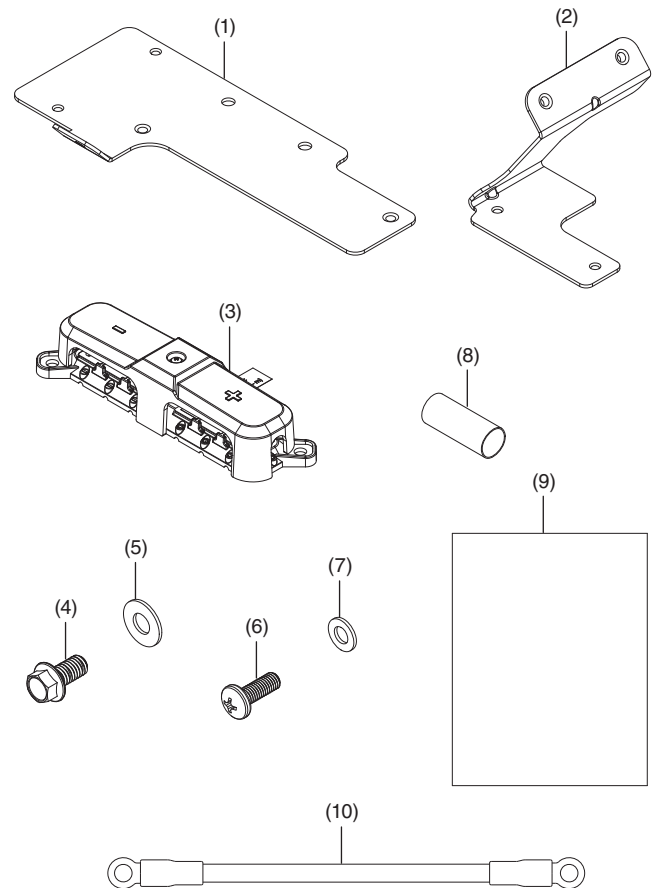
TOOLS REQUIRED

Torque driver
 Socket (8 mm)
 Socket (10 mm)
 #1 phillips bit
 #2 phillips bit
 Heat gun or electrical tape

TORQUE CHART

Tighten all screws, bolts, and nuts to their specified torque values. Refer to the Service Manual for the torque values of the removed parts.

PARTS LIST



No.	Description	Qty.
(1)	Main busbar mounting plate	1
(2)	Busbar lower support bracket	1
(3)	Busbar	1
(4)	6 x 12 mm flange bolt	4
(5)	6 x 14 mm washer	4
(6)	Phillips head screw	2
(7)	5 x 10 mm washer	2
(8)	Heat shrink	2
(9)	Installation Instructions URL	1
(10)	Harness, #6 AWG ground cable (28")	1

INSTALLATION

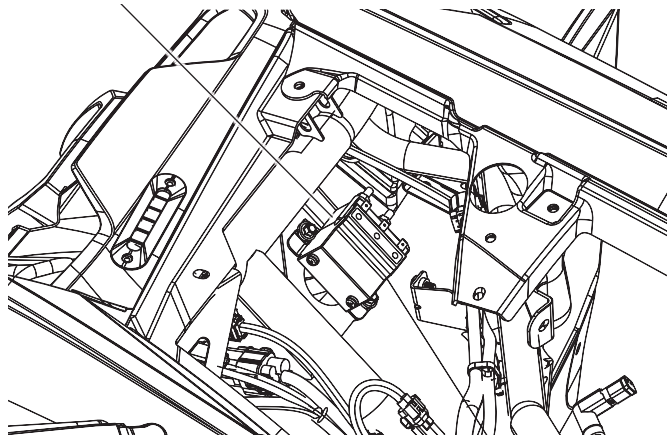
1. Refer to the vehicle service manual and remove the following parts:

- Hood
- Rear hood bolt
- Rubber splash guard
- Ground cable connection to battery

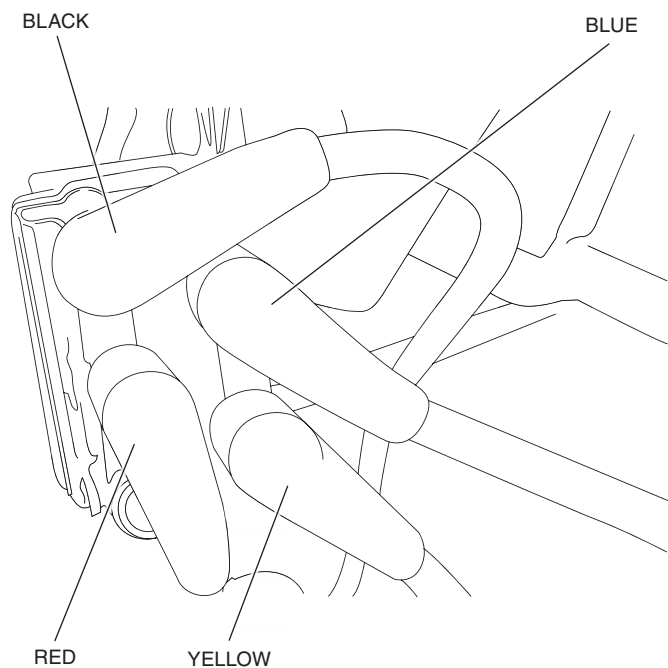
If vehicle is equipped with a winch:

2. Locate the winch contactor.

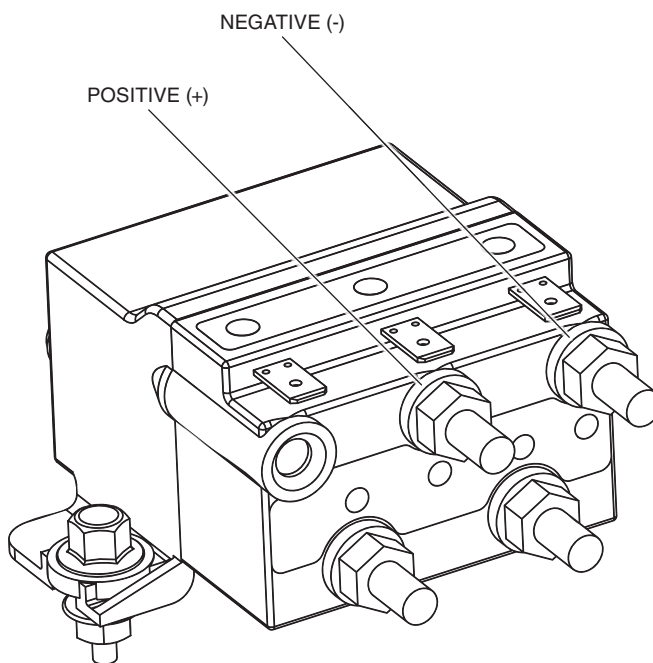
WINCH CONTACTOR



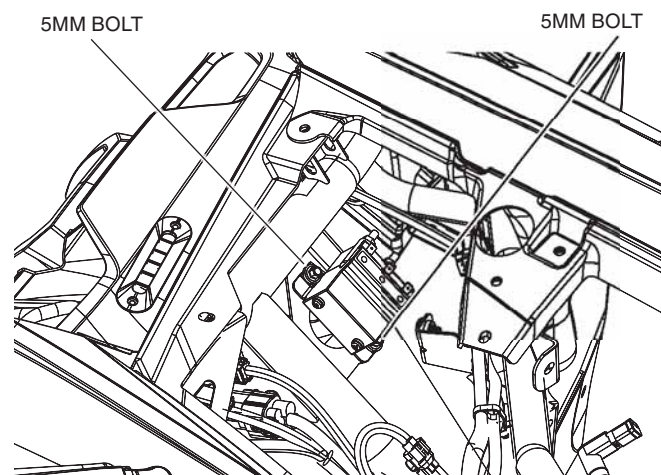
3. Pull the rubber terminal boots off the red and black power cable terminals at the contactor.



4. Remove the battery cables from the contactor by loosening the 6 mm nuts. Set nuts, lock washers and cables aside for reassembly later.

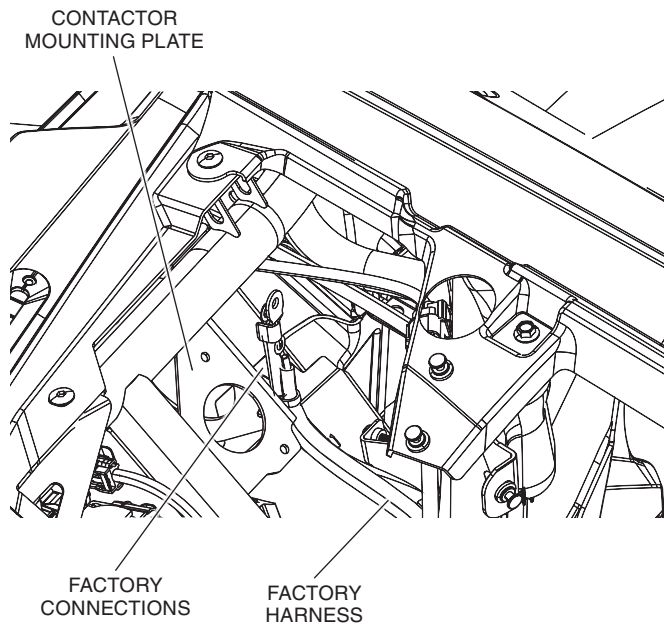


5. Remove the two factory 5 mm bolts, washers and nuts attaching the contactor to the frame, set contactor and hardware aside for later use.



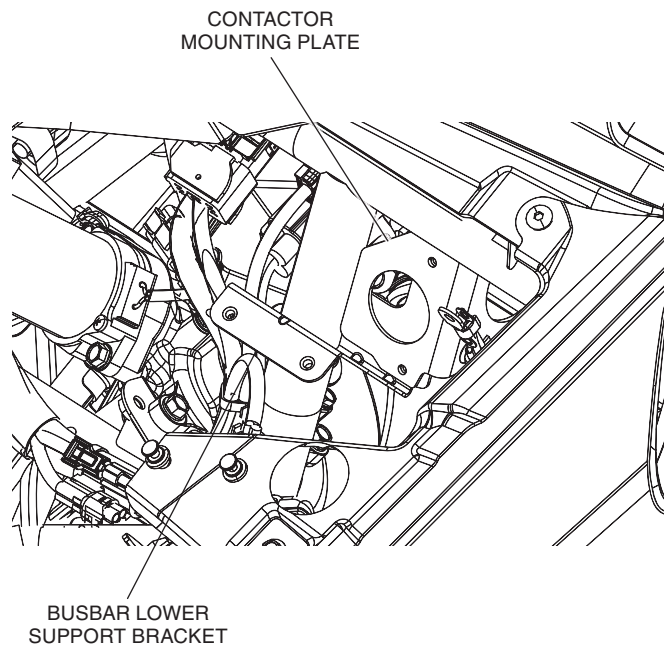
If vehicle is not equipped with a winch:

6. Unclip the power (+) connection near the contactor mounting plate and move the wire out of the way.



ALL APPLICATIONS:

7. Slide the busbar lower support bracket from the bottom behind the factory winch contactor mounting plate.



8. Attach the busbar lower support bracket with a phillips head screw and washer from the front of the bracket.

